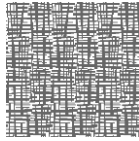


# Inspired Textures Grid



Milliken's Inspired Textures products are constructed to add subtle depth and dimensionality to any carpet design while withstanding heavy commercial applications. The combination of two patented Milliken technologies – Millitron® patterning and MYI™ (Multiple Yarn Infusion™) tufting – results in sophisticated textures with handmade randomness and unpredictability unlike any other machine-made carpet.

<b>Construction</b>	Tufted, Multiple Yarn Infusion, Multi-Level Cut & Loop Tip Shear
<b>Dye Method</b>	Digital Millitron® Dye Injection
<b>Face Fiber</b>	Ascend Nylon Type 6,6
<b>Stain and Soil Protectant</b>	StainSmart®
<b>Mold/Mildew Odor Control</b>	AlphaSan® Built-In Protection
<b>Bleach Resistance</b>	ColorSeal®
<b>Tufted Face Weight</b>	36 oz./sq.yd. (1,220.7 g./sq.m.)
<b>Tufting Gauge</b>	3/16 (21.0/10 cm.)
<b>Stitches</b>	13/in. (51.2/10 cm.)
<b>Tufting Density</b>	144/sq.in. (2,230.2/100 sq.cm.)
<b>Finished Pile Height</b>	0.28 in. high/0.13 in. low (7.1/3.3 mm.)
<b>Primary Backing</b>	Synthetic Woven
<b>Secondary Backing</b>	Endura-Loc™
<b>Recycled Content with Endura-Loc</b>	1% Pre-Consumer
<b>Recycled Content with optional attached pad</b>	1% Pre-Consumer, 12% Post-Consumer, 3% Rapidly Renewable
<b>Nominal Total Thickness</b>	0.37 in. (9.4 mm.)
<b>Width</b>	13' 6" (4.11 m.)
<b>Nominal Total Weight</b>	74.4 oz./sq.yd. (2,522.7 g./sq.m.)
<b>Flammability (Radiant Panel ASTM-E-648)</b>	≥ 0.45 (Class I)
<b>Smoke Density (NFPA-258-T or ASTM-E-662)</b>	≤ 450 Flaming and Non-Flaming
<b>Static Electricity (AATCC-134) 20% R.H., 70° F.</b>	≤ 3.5 KV
<b>Texture Appearance Retention Rating (TARR)</b>	Heavy Traffic End-Use Applications
<b>Recommended Maintenance</b>	MilliCare® Textile and Carpet Care Service Network
<b>Indoor Air Quality – CRI Green Label Plus™</b>	GLP8064, Carpet Category 1Y

### Optional Features Available:

<b>Secondary Backing - Attached Cushion</b>	Cushion-Loc™ featuring Enhancer™ Technology (500 sq. yd. min.)
<b>Secondary Backing - Attached Cushion w/Moisture Barrier</b>	Moisture-Bloc™ featuring Enhancer™ Technology (500 sq. yd. min.)
<b>Nominal Total Thickness with Attached Cushion</b>	0.49 in. sheared (12.4 mm.)
<b>Nominal Total Weight with Attached Cushion</b>	103.8 oz./sq.yd. (3,519.6 g./sq.m.)

Design © Milliken & Company. Specifications are subject to normal manufacturing tolerances and may be changed without prior notice.



### Warranties:

Wear - 10 Year / 10% Fiber Loss  
Staining/Soiling (StainSmart®)  
Bleach Resistance (ColorSeal®)  
Atmospheric Fading  
Delamination of Backing  
Antimicrobial Protection (AlphaSan®)

Edge Ravel  
Flammability  
Antistatic  
Tuft Bind  
Floor Compatibility

### Additional warranties if purchased:

Moisture Barrier (Moisture-Bloc™ backing)  
Cushion Resiliency (Cushion-Loc™ backing)